



**EQUIPMENT**  
**Operation Manual**

---



**Loctite<sup>®</sup> Reactive Urethane Cartridge Dispenser**  
**Item Number 98010**

# **Table of Contents**

<b>1 Please Observe The Following</b>	<b>3</b>
1.1 Safety	3
1.2 Items Supplied	3
<b>2 Description</b>	<b>3</b>
<b>3 Technical Data</b>	<b>3</b>
<b>4 Installation</b>	<b>4</b>
<b>5 Operation</b>	<b>5</b>
<b>6 Care and Maintenance</b>	<b>6</b>
<b>7 Troubleshooting</b>	<b>7</b>
<b>8 Accessories and Spare Parts</b>	<b>7</b>
<b>9 Warranty</b>	<b>7</b>
<b>10 Appendix</b>	<b>8</b>

---

# 1 Please Observe The Following

---

## 1.1 Safety

Read Manual Prior to Operating the Reactive Urethane Cartridge Dispenser.  
HOT SURFACES! The glue and nozzle of the dispenser can reach temperatures of 250 Degrees Fahrenheit. Avoid all skin contact.  
Connect only to a properly grounded electrical outlet. Do not modify the plug or use with an adapter. Improper connection may cause electrical shock.  
Do Not Use in damp or wet conditions!  
Wear safety glasses and protective gloves when operating dispenser.  
Set switch to "off" and unplug dispenser when not in use.  
Never put any object in dispenser other than the Reactive Urethane or Cleaning Cartridges from Loctite®.  
Never handle heated cartridges or nozzles without gloves.  
The dispenser is preset at 250 degrees Fahrenheit. Cartridges should not be heated above 275 Degrees Fahrenheit. Vapors of heated material may irritate eyes and respiratory tract. May cause asthma-like symptoms in people previously sensitized to isocyanates.  
Do not clean nozzles or surfaces with heat or flame.  
Read MSDS prior to product use.  
Place receptacle under nozzle to catch any residual Reactive Urethane, when unit is on but not dispensing.  
Cartridge contents exposed to moisture will cause loss of useable product life.  
Use dry air supply to regulator panel.

## 1.2 Items Supplied

Manual (1)  
Fixed Temperature Cartridge Dispenser (1)  
Pressure Regulating Stand (1)  
300 cc Cartridge adapter (2)  
Nozzle with cap (5)  
Heat resistant gloves (1 pair)  
Tubing Assembly (1 set)  
(see 984244 pg. 9)  
Cartridge Piercing Tool (1)

---

# 2 Description

---

The Loctite® Reactive Urethane Cartridge Dispenser is a fixed-temperature dispenser for industrial applications. The dispenser is suitable for all Loctite® Reactive Urethane Cartridges.

---

# 3 Technical Data

---

Dispenses 300 cc Aluminum Cartridge	
120 Volts A.C.	400 Watts
Warm-up time	7-10 minutes
Dispenser Weight	3.5 lb.
Maximum Air Pressure into Dispenser	90 PSI
Maximum inlet air pressure	110 PSI/8 Bars

---

## 4 Installation

---

- 4.1 Use a dry air source/unit available from Loctite or a commercial equivalent.



- 4.2 Connect air pressure line 1 from dispenser to regulator at bottom of regulator panel.



- 4.3 Connect Air inlet line from the back of the pressure regulating stand to the air source. Maximum Inlet Pressure is 110 PSI/8 Bars.



- 4.4 Plug in the power cord to a properly grounded electrical outlet. If the power switch on the dispenser illuminates, turn the switch to the off position.

- 4.5 Puncture the nozzle end of the cartridge with the Cartridge Piercing Tool.



- 4.6 Install the 300 cc adapter and nozzle on cartridge. Tighten with an adjustable wrench. Place cap on nozzle.



- 4.7 Install the cartridge into the back of the dispenser.



- 4.8 When the cover is closed, the back of the cartridge is punctured to allow air pressure in.



- 4.9 Close the cartridge dispenser and tighten the black knob to form a pressure seal.



- 4.10 The dispenser is now ready to operate. Be sure to remove the protective cap prior to dispensing the adhesive.



---

## 5 Operation

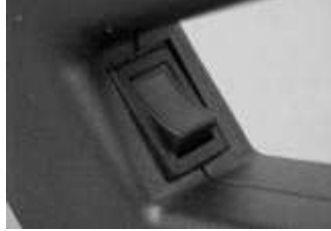
---

### **WEAR SAFETY GLASSES AND PROTECTIVE GLOVES WHEN OPERATING DISPENSER.**

Operate dispenser in a dry, uncluttered work space.  
Avoid skin contact with all hot areas of the dispenser.

- 5.1 Place receptacle under the nozzle to catch any residual hot melt, when unit is on but not dispensing.

- 5.2 Turn on the Power Switch located on the handle of the dispenser. The light in switch should illuminate. If not, check the plug.



- 5.3 Adjust the regulator pressure to approximately 40 PSI. The flow rate is proportional to pressure.



- 5.4 Remove the protective cap from the nozzle.



- 5.5 Dispense by pushing the dispense button located on the handle of the dispenser.



- 5.6 When dispensing is complete, place cap on nozzle. Use gloves for protection from the hot nozzle. If the cap is not installed, the nozzle will harden and become non-functional. Never attempt to clean with heat or flame! See Safety Section. Any nozzles without caps are considered disposable.

- 5.7 Turn the power switch off and shut off air pressure.

---

## 6 Care and Maintenance

---

Avoid getting Urethane inside the cartridge housing. Each cartridge provides a new dispense chamber. If the nozzles are maintained and hoses are not abused, unit should provide good industrial service. If nozzle adapter is binding when installing on the 300 cc Cartridges, spray a small quantity of Moly Dry Film Lubricant into a small container. Then using a Q-tip, apply a small amount to the outside threads of the cartridge before installing the nozzle adapter. Do not allow lubricant in the adapter, nozzle, or inside the cartridge end, because it may reduce or negate the adhesive properties of the product in the cartridge. Moly Dry Film Lubricant is available through Loctite®.

---

## 7 Troubleshooting

---

If cartridge does not advance with dispensing trigger, check to see if unit is plugged in and turned on.

Check that air pressure is on by reading pressure gauge.

Verify nozzle is not clogged. If clogged, replace nozzle.

---

## 8 Accessories and Spare Parts

---

<b>Spare Parts</b>	<b>Part Number</b>
Standard Cap Nozzle (Supplied with Dispenser) 5ea.	984262
Nozzle Adapter	984261
Dispenser	984254
Manual	984248
Stand with regulator and gauge	984245
Tubing Assembly	984244
Heat Resistant Gloves	984246
Wire Gun Support	984247
Cartridge Piercing Tool	984253

<b>Accessories</b>	<b>Part Number</b>
Foot switch	984280
Vertical Application Stand	984281

All nozzles listed below sold individually. Refer to Drawing number 984392 in the Appendix.

<b>Nozzle Adapter Required for each of the nozzles listed below</b>	984263
Nozzle - Needle Jet	984264
Nozzle - Diagonal extension	984265
Nozzle - Flat Spreader	984266
Nozzle - 2 hole Spreader	984267
Nozzle - 3 hole Spreader	984268
Additional nozzles are available as special order items. Refer to Drawing number 984393 in the Appendix.	

---

## 9 Warranty

---

Henkel expressly warrants that all products referred to in this Instruction Manual for the Reactive Urethane Cartridge Dispenser (hereafter called "Products") shall be free from defects in materials and workmanship. Liability for Henkel shall be limited, as its option, to replacing those Products which are shown to be defective in either materials or workmanship or to credit the purchaser the amount of the purchase price thereof (plus freight and insurance charges paid therefor by the user). The purchaser's sole and exclusive remedy for breach of warranty shall be such replacement or credit.

A claim of defect in materials or workmanship in any Products shall be allowed only when it is submitted in writing within one month after discovery of the defect or after the time the defect should reasonably have been discovered and in any event, within (12) months after the delivery of the Products to the purchaser. This warranty does not apply to perishable items, such as fuses, filters, lights, etc.. No such claim shall be allowed in respect of products which have been neglected or improperly stored, transported, handled, installed, connected, operated, used or maintained. In the event of unauthorized modification of the Products including,

where products, parts or attachments for use in connection with the Products are available from Henkel, the use of products, parts or attachments which are not manufactured by Henkel, no claim shall be allowed.

No Products shall be returned to Henkel for any reason without prior written approval from Henkel. Products shall be returned freight prepaid, in accordance with instructions from Henkel.

NO WARRANTY IS EXTENDED TO ANY EQUIPMENT WHICH HAS BEEN ALTERED, MISUSED, NEGLECTED, OR DAMAGED BY ACCIDENT.

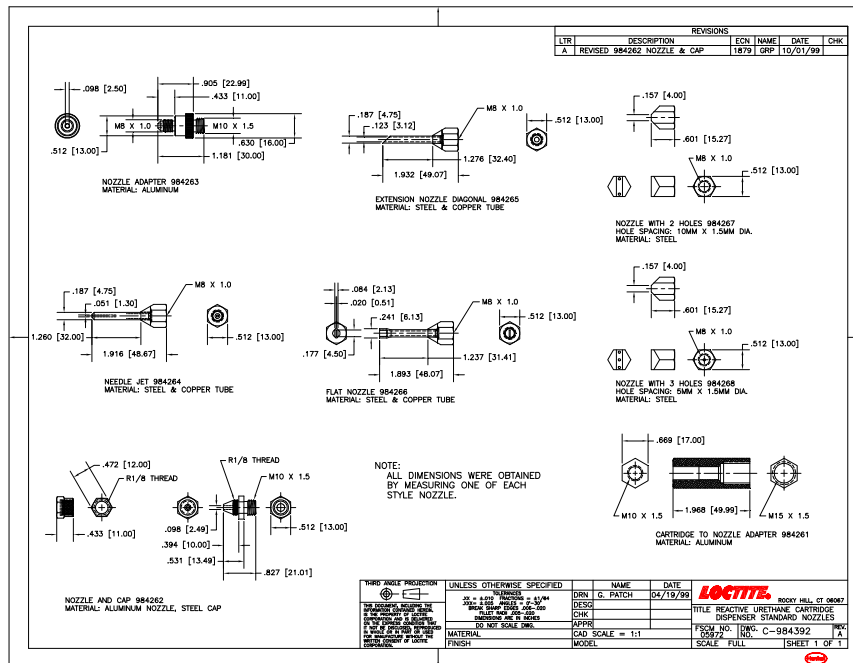
EXCEPT FOR THE EXPRESS WARRANTY CONTAINED IN THIS SECTION, HENKEL MAKES NO WARRANTY OF ANY KIND WHATSOEVER, EXPRESS OR IMPLIED, WITH RESPECT TO THE PRODUCTS.

ALL WARRANTIES OF MERCHANTABILITY, FITNESS FOR A PARTICULAR PURPOSE, AND OTHER WARRANTIES OF WHATEVER KIND (INCLUDING AGAINST PATENT OR TRADEMARK INFRINGEMENT) ARE HEREBY DISCLAIMED BY HENKEL AND WAIVED BY THE PURCHASER.

THIS SECTION SETS FORTH EXCLUSIVELY ALL OF LIABILITY FOR HENKEL TO THE PURCHASER IN CONTRACT, IN TORT OR OTHERWISE IN THE EVENT OF DEFECTIVE PRODUCTS.

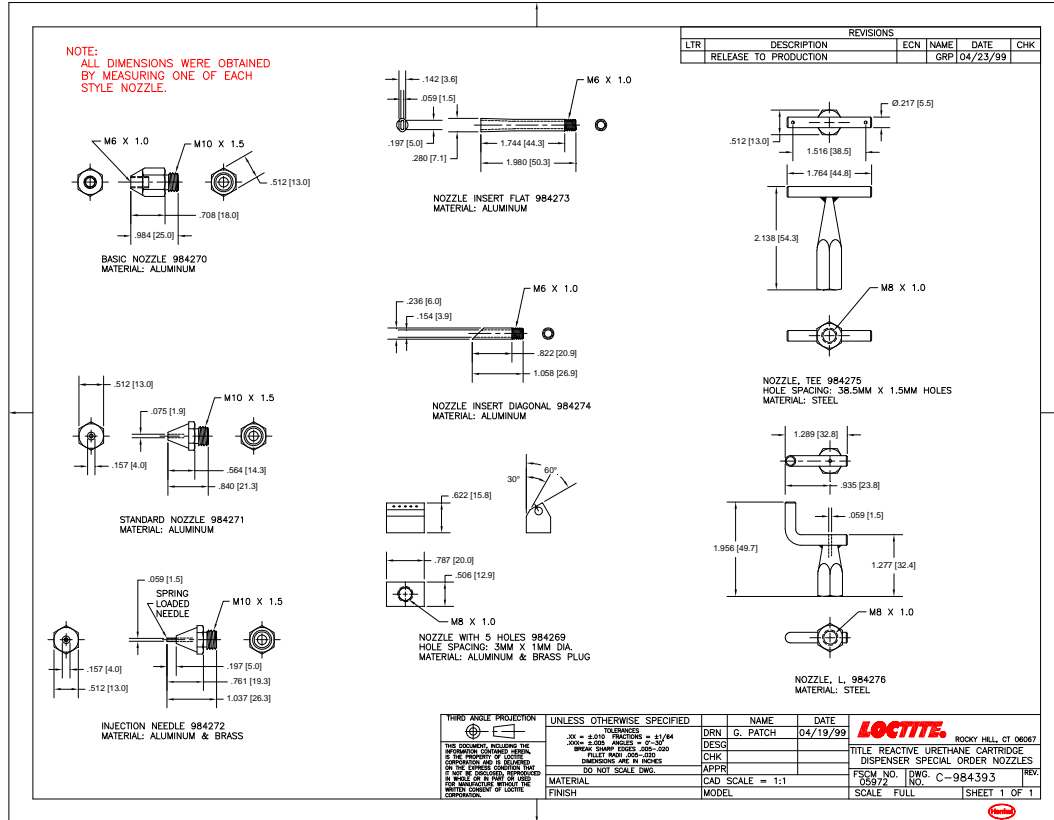
WITHOUT LIMITATION OF THE FOREGOING, TO THE FULLEST EXTENT POSSIBLE UNDER APPLICABLE LAWS, HENKEL EXPRESSLY DISCLAIMS ANY LIABILITY WHATSOEVER FOR ANY DAMAGES INCURRED DIRECTLY OR INDIRECTLY IN CONNECTION WITH THE SALE OR USE OF, OR OTHERWISE IN CONNECTION WITH, THE PRODUCTS, INCLUDING, WITHOUT LIMITATION, LOSS OF PROFITS AND SPECIAL, INDIRECT OR CONSEQUENTIAL DAMAGES, WHETHER CAUSED BY NEGLIGENCE FROM HENKEL OR OTHERWISE.

## 10 Appendix





# 10 Appendix



**Henkel Corporation**  
One Henkel Way  
Rocky Hill, CT 06067-3910

**Henkel Canada Corporation**  
2515 Meadowpine Boulevard  
Mississauga, Ontario L5N 6C3

**Henkel Capital, S.A. de C.V.**  
Calzada de la Viga s/n Fracc. Los Laureles  
Loc. Tulpetlac, C.P. 55090  
Ecatepec de Morelos, Edo. de México

**Henkel Corporation**  
**Automotive / Metals HQ**  
32100 Stephenson Hwy.  
Madison Heights, MI 48071

**Henkel Ltda.**  
Rua Karl Huller, 136 – Jd.  
Canhema 09941-410  
Diadema/SP, Brazil

[www.loctite.com](http://www.loctite.com)

® and ™ designate trademarks of Henkel Corporation or its affiliates. ® = registered in the U.S. and elsewhere. © Henkel Corporation, 2009. All rights reserved. Data in this operation manual is subject to change without notice.  
Manual P/N: 984248, Rev B, Date: 03/08/2013

