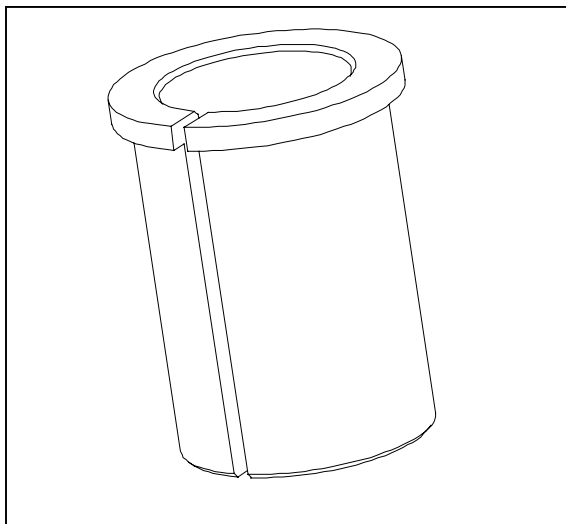


## Part No. 98320: 10 ml Adapter for Use with 98316 Mounting Bracket Kit



### Description:

This is inserted into a 98316 mounting bracket kit to allow it to accept 10 ml syringes. **The 98316 mounting bracket must be purchased separately.**

### Includes:

Qty	Description
1	10 ml adapter for use with 98316

### Required: \*\*\* Must Be Purchased Separately \*\*\*

Part No.	Description
98316	30 ml mounting bracket kit

### Instructions for Use:

1. Insert the adapter into the mounting bracket kit.
2. Tighten the mounting bracket using the two black screws.